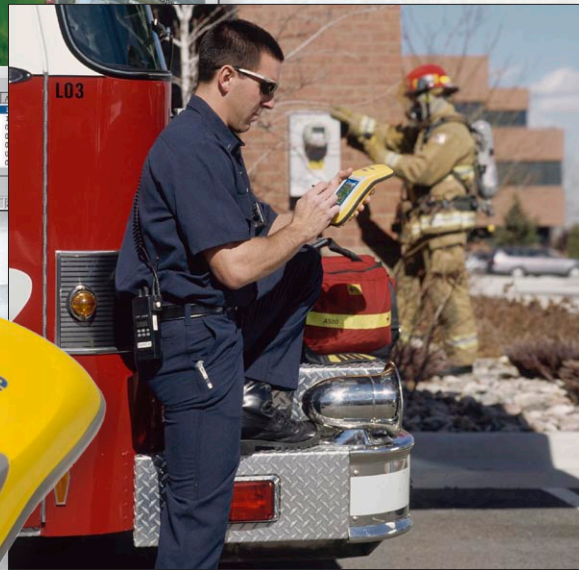
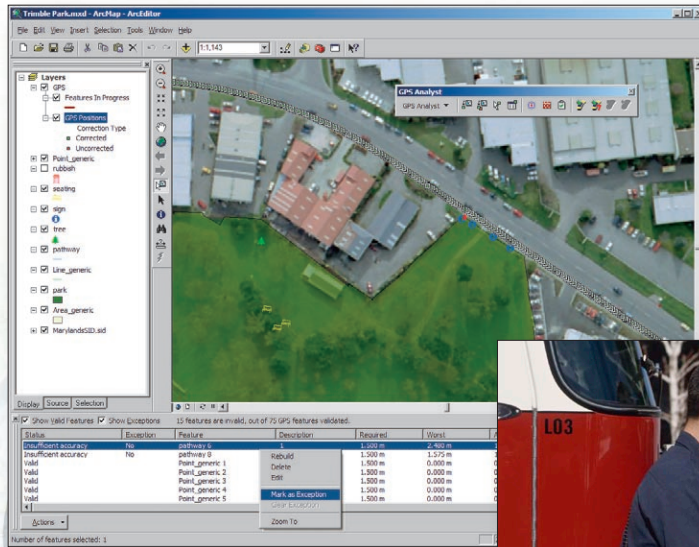


GeoCollector™

Mobile GIS with GPS for Superior Data Accuracy



GeoCollector™

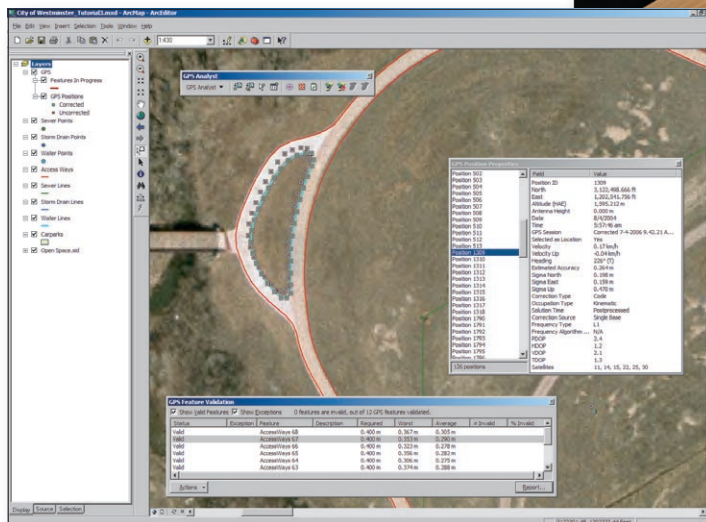
Mobile GIS with GPS for Superior Data Accuracy

With GeoCollector™, you can increase the accuracy of your data collection, resulting ultimately in a superior enterprise GIS. GeoCollector is an end-to-end field data collection solution that merges ESRI® mobile geographic information system (GIS) technology with Trimble® professional-grade Global Positioning System (GPS) hardware.

Easily Improve the Accuracy of Your Data

Organizations such as utility companies and government agencies require accurate location information to efficiently perform tasks ranging from field mapping to incident reporting. Mobile GIS is often the right tool to use, since it expands the GIS from the office into the field. When further accuracy is required, GPS can be added to the mobile GIS data collection and maintenance process, resulting in reliable and precise data that personnel can use to make more timely and informed decisions.

Three essential components are needed to fully take advantage of mobile GIS: a rugged handheld computer with an integrated, professional-grade GPS receiver; GIS software for field mapping applications; and GPS software to collect and postprocess detailed GPS data. GeoCollector integrates all these technologies to form a complete mobile GIS solution tailored to those who need the added accuracy of a professional-grade GPS.



Build an accurate enterprise GIS by getting all the elements you need in one package.

Hardware and Software Tailored to Your Needs

Hardware is a critical component of any mobile GIS effort, and GeoCollector includes an ultrarugged handheld computer with integrated GPS receiver from the current Trimble GeoExplorer® series. To meet the full range of field data collection requirements, three models of the device are available, covering the accuracy classes of subfoot, submeter, and one-to-three-meter accuracy. The GeoCollector subfoot is capable of achieving decimeter to subfoot accuracy with postprocessing or in real time with Virtual Reference Station (VRS) or dual-frequency base station suppliers. GeoCollector is preloaded with ESRI's ArcPad® software for mobile GIS as well as the Trimble GPScorrect™ extension for ArcPad. The combination of ArcPad and GPScorrect enables you to quickly and efficiently collect data in the field while automatically logging the detailed GPS information required to ensure reliable and accurate position data.

GPS Analyst—An Optional Extension for Additional Precision

You can further enhance data accuracy back in the office with the Trimble GPS Analyst™ extension for ArcGIS® Desktop, GPS postprocessing technology. GPS Analyst runs directly inside ArcGIS Desktop, allowing for direct transfer of data between your device and your geodatabase. In addition, GPS Analyst provides automated postprocessing of GPS data to ensure the best position accuracy possible from your collected data.

Hardware Specifications

All three models of the GeoCollector hardware come with the following specifications:

- 520 MHz XScale processor running the latest Microsoft® Windows® Mobile 6.0
- 1 GB nonvolatile Flash data storage
- VGA display (480 x 640) sunlight-readable color touch screen
- Sealed SD/SDHC card slot
- 802.11b/g wireless LAN connectivity
- Bluetooth® 1.2 wireless technology
- Internal rechargeable battery for all-day use



Automatically log detailed GPS information with GPScorrect for ArcPad during data collection to ensure reliable and accurate position data.

For more information, visit
www.esri.com/geocollector.



ESRI

380 New York Street
Redlands, California
92373-8100 USA

Phone: 909-793-2853
Fax: 909-793-5953
E-mail: info@esri.com

For more than 35 years, ESRI has been helping people make better decisions through management and analysis of geographic information. A full-service GIS company, ESRI offers a framework for implementing GIS technology and business logic in any organization from personal GIS on the desktop to enterprise-wide GIS servers (including the Web) and mobile devices. ESRI GIS solutions are flexible and can be customized to meet the needs of our users.

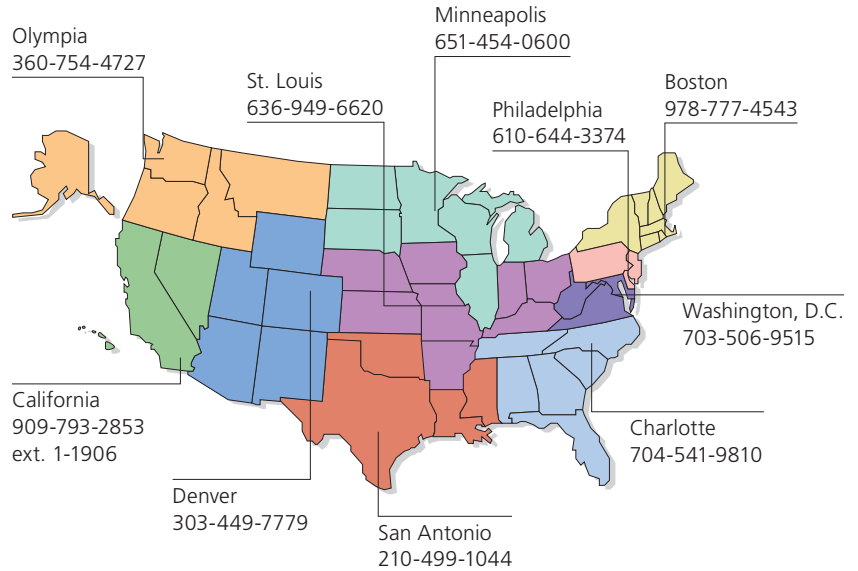
For More Information

1-800-GIS-XPRT (1-800-447-9778)

www.esri.com

Outside the United States, contact your local ESRI distributor. For the number of your distributor, call ESRI at 909-793-2853, ext. 1-1235, or visit our Web site at www.esri.com/distributors

ESRI Regional Offices



ESRI International Offices

Australia
www.esriaustralia.com.au

Belgium/Luxembourg
www.esribelux.com

Bulgaria
www.esribulgaria.com

Canada
www.esricanada.com

Chile
www.esri-chile.com

China (Beijing)
www.esrichina-bj.cn

China (Hong Kong)
www.esrichina-hk.com

Eastern Africa
www.esri-aea.com

Finland
www.esri-finland.com

France
www.esrifrance.fr

Germany/Switzerland
www.esri-germany.de
www.esri-suisse.ch

Hungary
www.esrihu.hu

India
www.esriindia.com

Indonesia
www.esrisa.com.my

Italy
www.esriitalia.it

Japan
www.esrij.com

Korea
www.esrikr.co.kr

Malaysia
www.esrisa.com.my

Netherlands
www.esri.nl

Northeast Africa
www.esri-nea.com

Poland
www.esripolska.com.pl

Portugal
www.esri-portugal.pt

Romania
www.esriro.ro

Singapore
www.esrisa.com

Spain
www.esri-es.com

Sweden
www.esri-sgroup.se

Thailand
www.esri-th.com

Turkey
www.esriturkey.com.tr

United Kingdom
www.esriuk.com

Venezuela
www.esri-ven.com



No. GS-35F-5086H