



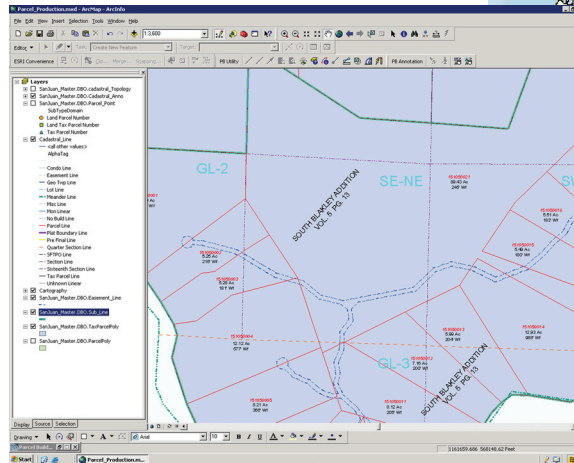
Project Profile

streamlined workflows

improved data accessibility

efficient GIS data maintenance

The Sidwell Company *and* San Juan County, Washington



675 Sidwell Court
St. Charles, IL 60174
630.549.1000

www.sidwellco.com



Project Profile

Sidwell and Parcel Builder™ Provide Streamlined GIS Data Maintenance for San Juan County, Washington

Introduction

San Juan County is located along the Pacific coast in northwestern Washington. Established in 1873, San Juan County is comprised of a cluster of approximately 200 islands. The County covers a total of 621 square miles, 446 of which consist of water, and 175 of which consist of land, making it the smallest of Washington's 39 counties in land area. The main islands are Orcas Island, San Juan Island, Lopez Island, and Shaw Island.



San Juan County was maintaining their existing cadastral GIS data in 3 CAD files, each of which covered a distinct area of the County. The spatial accuracy of their data was excellent, at 0.40 feet or better in most areas. This CAD data was exported on a monthly basis to shapefiles for use with other applications, including an internal and a public website and ArcGIS® desktop software. The data was also used regularly in analysis tasks performed by other agencies. These export routines were contained in separate shapefiles for each distinct area of the County, and multiple layers of information were also exported separately.

The Challenge

As the demand for access to the GIS data continued to increase, San Juan County was faced with a workflow that was no longer serving the needs of their enterprise. Topology and relationships needed to be established between the parcels and other GIS data. It was not feasible to establish these relationships when the parcel data was not maintained in GIS. Data integrity was also an issue since there was not a way to enforce correct attribute values. The County was faced with an additional challenge in the form of the pending retirement of their existing GIS/Mapping Technician, who had nearly 12 years of background and experience working with the County's system and land records data. There was a real possibility of hiring a replacement that did not have any GIS experience due to the other skills required for the position. They were left with an extremely short timeframe in which to find a solution that was easy to implement for a GIS novice, improved their workflow, and eliminated the constraints of maintaining data outside of GIS.

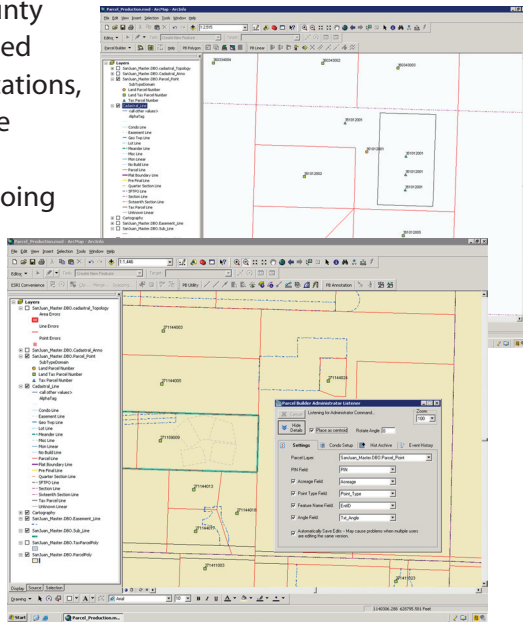
The Solution

After researching its options, San Juan County chose The Sidwell Company, an ESRI® business partner, to migrate all County cadastral GIS data into a tagged model inside an ESRI geodatabase. Sidwell's geodatabase conversion experience, coupled with the efficiencies to be gained from the deployment of their Parcel Builder™ software made them the logical

solution for San Juan County. The toolkit provided by Parcel Builder offers streamlined editing tools and enhanced map maintenance workflows for multiple editors. Sidwell also provided the County with recommended workflow modifications, data and software installation and training, and ongoing technical support.

A workgroup geodatabase was created using ArcSDE®, and the County's parcel inventory was loaded into Sidwell's ArcGIS-supported Parcel Builder-Administrator™ software. The County has a unique business model which requires both "land parcel" and "tax parcel" polygon data sets, and as the project proceeded, the County found themselves impressed by the ease with which Sidwell's Parcel Builder-MapEditor™ and Administrator software modules could be adapted to this model.

The County's new system allows for direct access to the most current data from any ArcGIS desktop within the connected enterprise network, as well as for easy export of data to those users who are not connected. The County has also taken advantage of the opportunity to participate in the Enterprise License Agreement program from ESRI. This program, with its straightforward, tiered pricing schedule, allows San Juan County to pay an annual fixed price in exchange for software, maintenance, services, and training from ESRI.



Results

With an editing environment that utilizes Parcel Builder, SDE and working within the tagged data model, San Juan County is now able to have multiple editors across the enterprise and can maintain all cadastral features more efficiently, especially for their parcel and tax map data sets. While the County originally had concerns over the volume of their backlog and how quickly it could be addressed, these were quickly alleviated with the workflow efficiencies realized once the Parcel Builder suite was in place.

They expect to have their entire backlog processed within 45 calendar days of final delivery of all converted data.

An important element of the existing CAD data was its accuracy; it was crucial to San Juan County that all accuracy levels be maintained post-conversion. The County benefits in multiple ways from their decision to use the tagged data model: it provides a greater degree of flexibility to the data and what can be exported to meet the needs of different departments, and this resulting flexibility in no way degrades the level of accuracy inherent in the County's data prior to conversion. The use of the tagged data model along with ArcGIS's advanced feature labeling options will also allow the County to create new, more usable printed map solutions to meet the needs of a wide variety of County departments. With the help of Sidwell, the County has been able to finally realize their goal of efficient editing of their cadastral GIS data in the ArcGIS environment.

"Sidwell did an excellent job converting our parcel data into a format that we can now incorporate into our Countywide data model. Parcel Builder is easy to learn and the tag data model handles our land parcel and tax parcel data efficiently and accurately. We are very pleased with the outcome!"
Melissa Crane
GIS Program Coordinator



ESRI
Technology
AUTHORIZED
BUSINESS PARTNER



PROJECT SUMMARY

Challenge

San Juan County needed to perform cadastral GIS data conversion to streamline workflows, establish topology with other GIS data, and train new employees in a short timeframe.

Results

- Improved data accessibility to multiple editors across the enterprise
- Software easily adapted to fit the County's land and tax parcel business model
- High-volume conversion of data to shapefiles no longer required
- Greater flexibility of data to meet the needs of other departments
- Provides the County an opportunity to create new, user-friendly printed map solutions

| | |
|--|---|
| <p>ESRI Software ArcGIS ArcIMS (move to ArcGIS Server planned) ArcSDE ArcInfo ArcView</p> <p>Other Software Sidwell Parcel Builder Microsoft SQL Server Internal Tax/CAMA application</p> <p>Hardware Dedicated GIS and Web servers Dell GIS Workstations</p> | <p>Available Data Property (parcel) Drainage Infrastructure Hydrology Critical Areas (i.e. Protected lands and habitats) Transportation Elections Emergency Response Land Use Address Points and Driveways Noxious Weeds</p> |
|--|---|

About Sidwell

Sidwell is the leading provider of GIS technology and related mapping services for local business and government needs. Sidwell's mission is to create and deliver outstanding products and provide excellent services to our clients, while developing close, trusting, and enduring professional relationships with them. Among the comprehensive products and services offered by the company are GIS planning, design and implementation; data conversion and cadastral database development; aerial photography; software development; photogrammetric services including topographic, planimetric and digital orthophoto mapping; training; technical support services; and web hosting for GIS data. Sidwell is an Authorized ESRI Business Partner, developer, reseller, and consultant, and is also an Authorized dealer of Magellan navigational equipment.



675 Sidwell Court
St. Charles, IL 60174
630.549.1000



www.sidwellco.com

All ESRI software trademarks used under license from ESRI®