

Lincoln County New Mexico

Project Profile



Carrizozo, New Mexico

Lincoln County is in central New Mexico among mountainous terrain and sprawling basins. The county was using outdated technology to manage their GIS data and looked to standardize their GIS on an Esri platform to ensure a more stable environment for their GIS information. Sidwell reviewed existing parcel maintenance workflows to determine optimal processes. Additionally, a data model needed to be designed to best fit the needs of the county. Sidwell recommended a path to modernize the county's GIS revolving around Esri's Local Government Information Model (LGIM) and the parcel fabric.

"Our mapping system has grown by leaps and bounds. We are now able to produce wonderful colored maps for our constituents and share data with other governmental departments that we were unable to in the past. This data sharing is vital when a natural disaster happens as has happened here in June of 2012. We are also able to add data layers to our current mapping system, which is a key component for other offices within Lincoln County. The Sidwell Company has provided excellent training and technical support for our GIS department."

-Paul Baca, Former NM Assessor



2570 Foxfield Rd, Suite 300 | 877.743.9355 | sidwellco.com



Lincoln County New Mexico

Path to Modernization

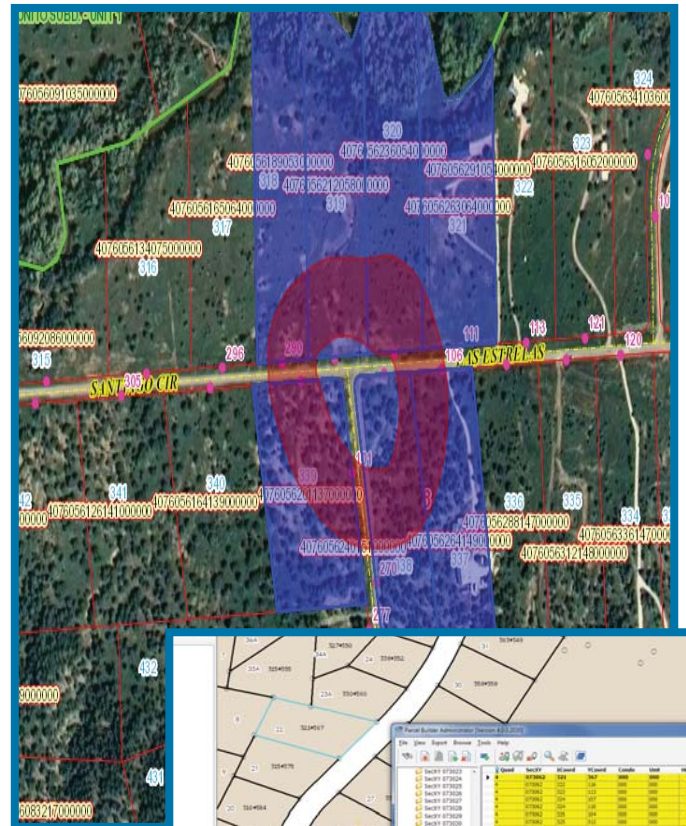
- Sidwell assisted the county with the migration to the Esri parcel fabric model. As a result, the county became an early adopter to Esri's Local Government Information Model (LGIM) and *is the very first of its kind in the state of New Mexico.*
- Original CAD files were moved into a georeferenced environment, validated, and cleaned for topology.
- The migrated data was more **topologically sound and accurate** than the existing source data. This data included parcel, lot, subdivision, and block features.
- Sidwell introduced workflows that combined the ArcGIS for Desktop tools plus their [Parcel Administrator](#) solution.

Product Highlights and Integrations

- Sidwell's [Parcel Administrator](#) helps adhere to the unique state standards for parcel number generation in New Mexico, and became the **sole source for all parcel number generation within the county.**
- Parcel Administrator is integrated with the county's Triadic, Inc. tax system to ensure synchronization of parcel entry between the map and tax systems.
- County data is hosted using the Sidwell [Portico web](#) viewer, allowing Lincoln County's staff and the public quick and easy access to query and analyze the land records information online.

Impact

- Sidwell experts provided professional service training to county staff not only allowing them to utilize the parcel geodatabase and integrated land records management system, but to also perfect several critical tasks with GIS by aiding the development of addressing, zoning, and building footprint layers.
- The data modernization effort provides constituents of Lincoln County with access to **enhanced parcel data.**
- Lincoln County is now able to manage their cadastral GIS using the latest technology. They have streamlined the parcel maintenance workflows and have integrated the process of managing the GIS and CAMA data. They are now able to easily deploy accurate and reliable data to the public via their website, and to their staff in the field.



Lincoln County

Area: 4,831 sq. miles

Parcels: 40,914

Population: 20,497

Density: 4.2/sq. mi

*as of 2010 census



With over 90 years of experience, Sidwell is an industry-leading geospatial solutions provider specializing in GIS products and services to meet the diverse needs of state and local government offices and private industries.



esri

Partner Network
Gold



ArcGIS for
Local Government
Specialty



ArcGIS Online
Specialty