

Franklin County Pennsylvania

Project Profile



Chambersburg, Pennsylvania

Franklin County is located in south central Pennsylvania and lies, to a large extent, in the Cumberland Valley. This project began as a challenging GIS construction from scratch using original land records from the county. Now the county's records and data have been updated to the latest technology using the Local Government Information Model (LGIM). The project included cadastral data development, workflow analysis, geodatabase design, installing [Parcel Administrator](#) software, and training.

"We knew the power of what a common base layer like the parcel fabric dataset could do for our GIS operations, and it did not disappoint. Our excitement stemmed from the ability to connect our data in a more meaningful way via the parcels. It was like turning on a light in a dark room. Today our GIS has performed functions not even imagined at the time of initial creation of the parcel dataset because of its incorporation into our daily operations"

- Kevin Eaton, Franklin County GIS Coordinator



2570 Foxfield Rd, Suite 300 | 877.743.9355 | sidwellco.com



Franklin County Pennsylvania

Assessment

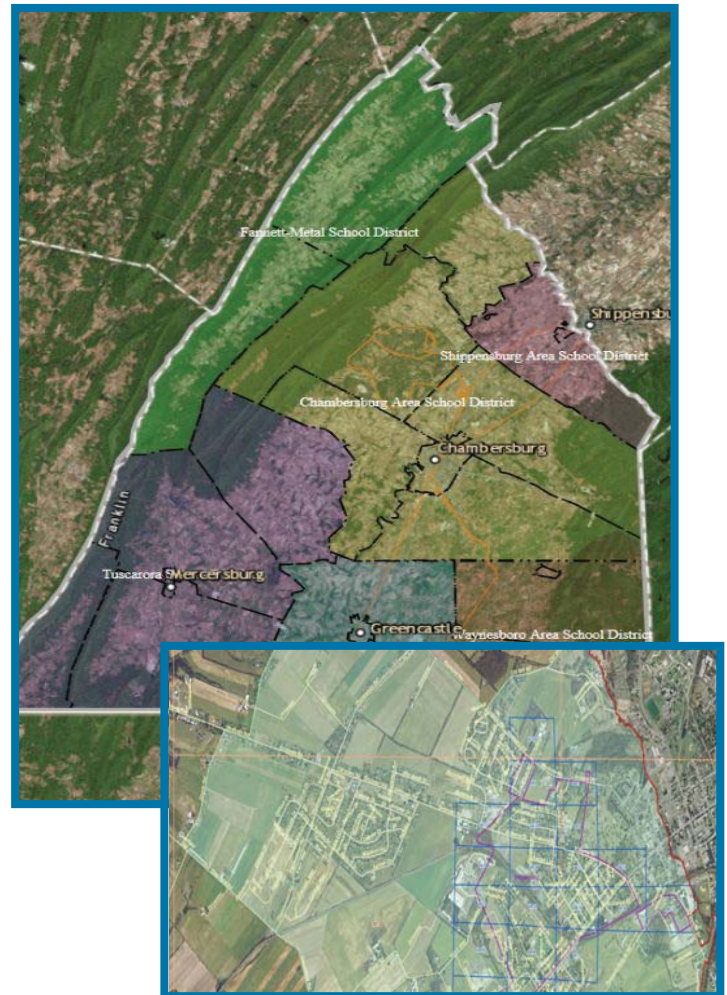
- Prior to the creation of the parcel fabric dataset, GIS in the county struggled to tie certain datasets together in a meaningful way.
- Sidwell staff performed research and a document survey to determine what source documents were available to develop the GIS.
- Many documents were old and fragile, so Sidwell used its document capture systems to photograph them and convert them to digital format, on-site.

The Solution

- GIS technicians performed preliminary layout using any available survey monuments and orthophotography.
- Sidwell's staff mapped out 72,000 parcels using right of way (ROW) centerlines, boundaries, and dimensions from legal descriptions.
- The mapping was loaded into Esri's LGIM and [Parcel Fabric](#) model.
- Improved the accuracy of other functional GIS datasets such as parks and recreation, cemeteries, and 911 emergency operations layers.
- The county received a successful GIS project completed on time and within the budget they assigned.

Impact

- Franklin County implemented Sidwell's [Parcel Administrator](#) Suite to assist them in protecting their investment by efficiently maintaining their data.
- Sidwell staff provided training to support the maintenance workflow of their new data model system.
- GIS operations have grown in Franklin County, and has operated within nearly every department within the county to provide information for enhanced decision making.



Franklin County

Area: 773 sq. miles
Parcels: 71,196
Population: 149,618
Density: 199/sq mi
*as of 2010 census



With over 90 years of experience, Sidwell is an industry-leading geospatial solutions provider specializing in GIS products and services to meet the diverse needs of state and local government offices and private industries.

